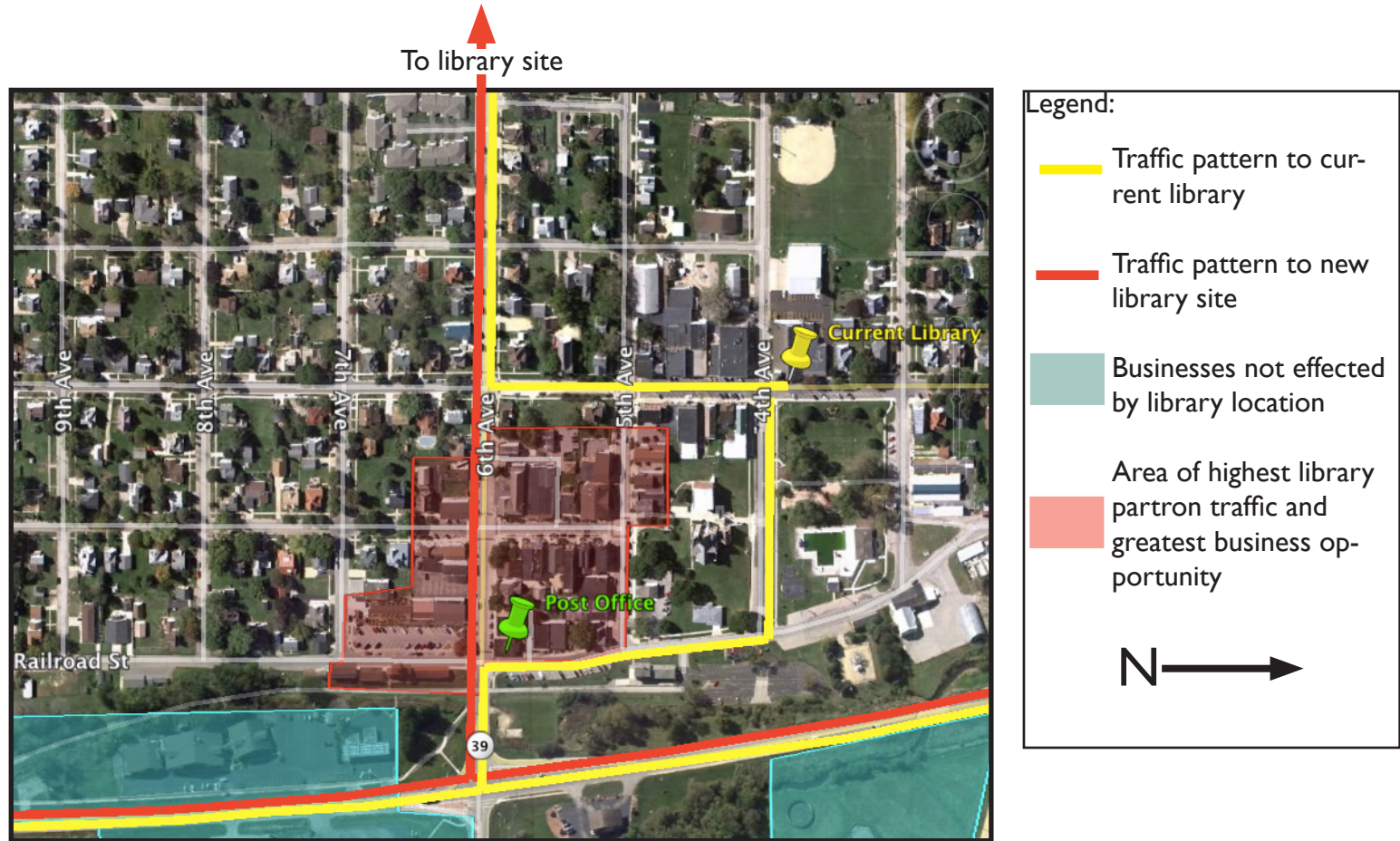




New Glarus Public Library

The time has come!

Expanded Business Opportunity for Downtown Businesses



While we anticipate that most businesses located on Highway 69 will not notice any difference in traffic due to the new library location, we believe that many businesses located in the downtown area will receive an increase in business traffic due to the fact that most library patrons will be directed by preferred traffic patterns directly through the 6th Avenue area, an area that is typically avoided by current library patrons. We believe the redirection of library patrons directly through the downtown business area will provide expanded business opportunities.